



## Telfairia occidentalis Hook f. mitigates Carbon Tetrachloride induced Nephrotoxicity in Rat

Usunobun Usunomena<sup>1,2\*</sup>, Augustine Okpiabhele<sup>2</sup>

<sup>1</sup>Department of Biochemistry, Faculty of Basic Medical Sciences, Edo State University Uzairue, Edo State, Nigeria

<sup>2</sup>Department of Biological and Chemical Sciences (Biochemistry Unit), Faculty of Natural and Applied Sciences, Michael and Cecilia Ibru University, Agbarha-Otor, Ughelli, Delta State, Nigeria

\*Corresponding author: Usunobun Usunomena, Address: Department of Biochemistry, Faculty of Basic Medical Sciences, Edo State University Uzairue, Edo State Nigeria, Email: usunobun.usunomena@edouniversity.edu.ng, Tel: +7123480341748

### Abstract

**Background & Aims:** *Telfairia occidentalis* Hook f. is consumed in different parts of the Niger-Delta region of Nigeria due to its high nutritional and medicinal benefits. This study focused on the restorative potentials of *Telfaria occidentalis* aqueous leaf extract on carbon tetrachloride (CCl<sub>4</sub>)-induced renal toxicity in wistar rats.

**Materials & Methods:** In this experimental study, five experimental groups of rats were used. One group received distilled water and serve as normal control. Second group received carbon tetrachloride (CCl<sub>4</sub>) alone for four days. Third and fourth groups received CCl<sub>4</sub> for four days prior to treatment with 200 mg/kg and 400 mg/kg *T. occidentalis* aqueous extract for six days, respectively. The last group received CCl<sub>4</sub> for four days prior to treatment with Silymarin (100 mg/kg) for six days. With exception of normal control rats, all rats received a mixture of freshly prepared CCl<sub>4</sub> in olive oil (1 ml/kg, 1:1 intraperitoneally) for 4 days. Activities of renal markers and lipid profile molecules in serum and histopathological analysis were assessed. Differences between means of groups were determined by One-way ANOVA using SPSS v.20. The mean differences were compared with the Duncan multiple range test. A probability level of less than 5% ( $P < 0.05$ ) was considered significant.

**Results:** Results revealed that CCl<sub>4</sub> toxicity caused a significant increase ( $P < 0.05$ ) in the level of serum kidney function markers (Creatinine and Urea) and in lipid profile molecules (Total Cholesterol and Triglycerides) whereas *T. occidentalis* administration showed a dose-dependent nephro-protection as it significantly mitigated the effects of CCl<sub>4</sub> on the kidney function markers and lipid profile molecules assessed. The observed CCl<sub>4</sub> toxicity and renal protection by *T. occidentalis* were corroborated by the results of histopathological analysis.

**Conclusion:** The results showed that *T. occidentalis* aqueous leaf extract mitigated the exacerbated effect of CCl<sub>4</sub> on renal functions which can be attributed to its bioactive agents.

**Keywords:** Carbon Tetrachloride, Kidney, Rats, *Telfaria occidentalis*

Received 08 December 2022; accepted for publication 28 May 2023

## Introduction

Plants have played very important therapeutic roles in maintaining and enhancing the quality of human health for thousands of years. For decades now, natural compounds have continued to be considered as one of the promising therapeutic agents against cancer, cardiovascular diseases, aging, diabetes, and neurodegenerative disorders due to their wide variety of modes of action, efficiency, accuracy, and fewer side effects (1-2). *Telfairia occidentalis* Hook f., commonly called fluted pumpkin or uguwu and occurs in the forest zone of West and Central Africa most especially in Nigeria, Benin, and Cameroun, is well grown as a leaf vegetable (3-4). *Telfairia occidentalis*, darkish-green leafy Vegetable of the Cucurbitaceae family is used in herbal preparations for the management of many diseases such as anaemia, hypertension, diabetes, and heart diseases in Nigeria (5-6). *Telfairia occidentalis* is rich in minerals such as iron, potassium, phosphorus, calcium, and magnesium (7), as well as in antioxidants and phytochemical compounds such as phenols, cucurbitacine, anthocyanins, flavonoids, tannins,  $\beta$ -carotene, lycopene, vitamins A, C, and E (8-9). It is a popular medicinal plant known locally for its antidiabetic, antiplasmodial, hypoglycemic, hypolipidemic and antibacterial properties with most of these benefits being reported in various parts and different preparations of the plant in the laboratories (10-13). Several extracts of *T. occidentalis* leaves have been reported to elevate antioxidants levels both *in vivo* and *in vitro*, and scavenge, prevent, or suppress the production of free radicals (14-16).

## Materials & Methods

### Chemicals:

Silymarin, Hydrogen peroxide,  $\text{KMnO}_4$ , Epinephrine, thiobabutaric acid, carbon tetrachloride, and absolute ethanol (99.8%) were purchased from Sigma-Aldrich (USA). Biochemical assays kits were obtained from Randox Diagnostics (Randox, United Kingdom). All other chemicals and reagents were of analytical grade.

## Collection and Extraction of *Telfairia occidentalis* Leaves:

Fresh leaves of *T. occidentalis* were purchased from Ekiosa market, Benin City, Edo State, Nigeria and identified by a taxonomist. The Fresh leaves were thoroughly rinsed and air-dried at room temperature (24°C) and then pulverized, crushed into fine powder using a manual blender and weighed. Aqueous extract of the plants was prepared by soaking 1000 g of the dry powdered plant materials in 5 liters of double distilled water and then kept at room temperature for 48 hours (for thorough extraction). At the end of the 48 hours, the extract was filtered first through a Whatmann filter paper No. 42 (125 mm) and then through cotton wool. The filtrate was concentrated using a rotary evaporator with the water bath set 40°C until the crude extract was obtained. The dried residue (crude extract) was then stored at 4°C. Aliquot portions of the crude plant extract residue was weighed and dissolved in normal saline for use on each day of the experiments.

### Experimental Design/Procedure:

Adult male albino rats were purchased and allowed to acclimatize for 7 days and maintained under standard conditions, provided pelleted growers' mash (containing 18 % crude protein and 2600Kcal/kg metabolizable energy, Guinea Feed, Nigeria PLC) and drinking water *ad libitum*. A daily cycle of 12 hours of light and 12 hours of darkness were provided for the animals. The study was conducted on 40 healthy Wistar male albino rats weighing 190-200 g, randomly assigned to five treatment groups of 8 rats each. The study was carried out in accordance with the guidelines for ethical conduct in the care and use of nonhuman animals in research (17).

One group received distilled water and serve as normal control. Second group received carbon tetrachloride ( $\text{CCl}_4$ ) alone for 4 days. Third and fourth groups received  $\text{CCl}_4$  for 4 days prior to treatment with 200 mg/kg and 400 mg/kg *T. occidentalis* aqueous extract for 6 days, respectively. The last group received  $\text{CCl}_4$  for 4 days prior to treatment with Silymarin (100 mg/kg). With exception of normal control rats, all rats received a mixture of freshly prepared  $\text{CCl}_4$  in olive

oil (1 ml/kg, 1:1 intraperitoneally) for 4 days. *T. occidentalis* at a dose of 200 mg/kg and 400 mg/kg was chosen based on the previous studies of Saalu et al. (18) and Akang et al. (19).

24 hours after last administration, the rats from each group was sacrificed by cervical dislocation and blood samples obtained through heart puncture via a syringe into sample bottles containing no anticoagulant. The blood samples collected in sample bottles were allowed to clot and subsequently centrifuged at 5000 rpm for 20 min at room temperature to obtain serum for biochemical assays.

#### Biochemical Parameters:

Serum urea was determined using the RANDOX Kit according to the manufacturer's instructions following the method of Fawcett et al. (20), while serum creatinine was determined by using the Jaffe's method. The determination of serum Total Cholesterol (TC) was by method of Searcy et al. (21) while serum triglyceride (TG) was by method of Tiez et al. (22).

#### Histopathological Analysis:

Immediately after sacrifice, the kidney of both the test and control rats were excised, dried with blotting paper, weighed and a portion instantly fixed in 10% phosphate buffered formalin. Fixed tissue samples were

embedded in paraffin blocks and sections of 5 mm were prepared. Sections were stained with hematoxylin and eosin (H & E), and examined under Olympus/3H light microscope. Photomicrographs of the kidney were captured using a Moticam Images Plus 2.0 digital fitted to the light microscope.

#### Statistical Analysis:

Data obtained from this study were expressed as mean value  $\pm$  standard deviation. Differences between means of groups were determined by One-way ANOVA using Statistical Package for social scientist (SPSS) v.20. The mean differences were compared with the Duncan multiple range test. A probability level of less than 5% ( $P < 0.05$ ) was considered significant.

#### Results

Kidney functional markers in the serum of control and treated rats are provided in Table 1. The result of kidney assessment showed that compared to control and extract treated groups, CCl<sub>4</sub> alone rats exhibited a significant increase in serum Creatinine and Urea. However, treatment of CCl<sub>4</sub>-induced rats with *T. occidentalis* aqueous extract at a dose of 200 mg/kg and 400 mg/kg resulted in a significant reduction in Creatinine and Urea.

**Table 1.** Effects of *Telfairia occidentalis* aqueous leaf extract on Kidney function parameters in Carbon tetrachloride (CCl<sub>4</sub>)-induced wistar rats

Treatment groups	Creatinine (mg/dl)	Urea (mg/dl)
Control	0.61 <sup>a</sup> ±0.05	15.21 <sup>a</sup> ±1.17
CCl <sub>4</sub>	1.98 <sup>b</sup> ±0.11	65.87 <sup>b</sup> ±2.02
<i>T. occidentalis</i> (200 mg/kg) + CCl <sub>4</sub>	1.09 <sup>c</sup> ±0.09	31.43 <sup>c</sup> ±2.01
<i>T. occidentalis</i> (400 mg/kg) + CCl <sub>4</sub>	1.03 <sup>c</sup> ±0.05	24.63 <sup>d</sup> ±2.30
Silymarin (100 mg/kg) + CCl <sub>4</sub>	0.99 <sup>c</sup> ±0.07	24.98 <sup>d</sup> ±2.51

Values are expressed as Mean  $\pm$  Standard Deviation. Values with different superscripts down the column differ significantly ( $p < 0.05$ ).

The results presented in Table 2 showed the data obtained from the effects of *T. occidentalis* aqueous leaf extract on lipid profile in CCl<sub>4</sub>-induced toxicity in rats. The result showed that CCl<sub>4</sub> induction elevated serum total cholesterol and triglyceride levels when compared

to control and extract treated groups. However, it was also revealed that treatment with *T. occidentalis* produced a dose-dependent significant ( $p < 0.05$ ) reduction in serum total cholesterol and triglycerides levels compared to the CCl<sub>4</sub> alone group.

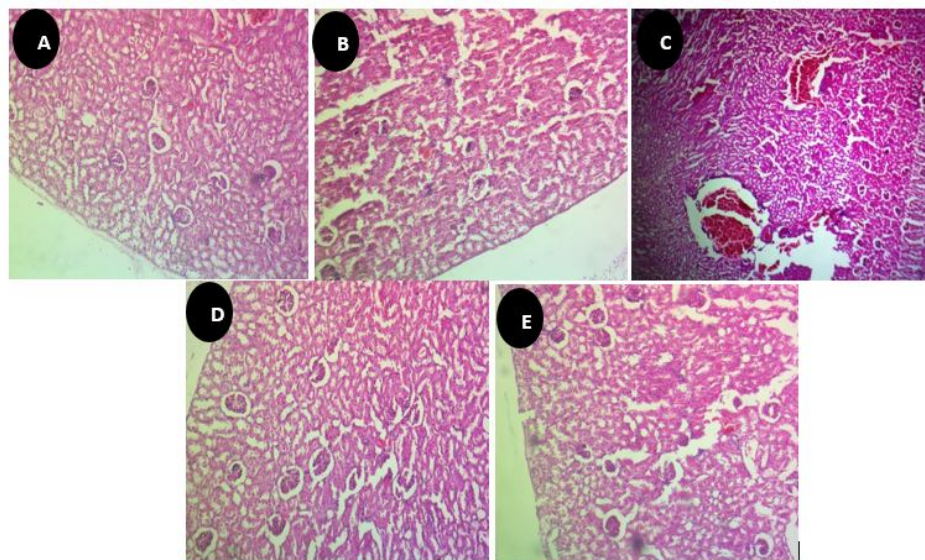
**Table 2.** Effects of *Telfairia occidentalis* aqueous leaf extract on Lipid Profile in Carbon tetrachloride (CCl<sub>4</sub>)-induced wistar rats

Treatment groups	Tot Cholesterol (mg/dL)	Triglyceride (mg/dL)
Control	98.38 <sup>a</sup> ±2.67	121.83±3.05
CCl <sub>4</sub>	176.26 <sup>b</sup> ±3.06	201.87±3.02
<i>T. occidentalis</i> (200 mg/kg) + CCl <sub>4</sub>	114.42 <sup>c</sup> ±3.02	140.01±2.31
<i>T. occidentalis</i> (400 mg/kg) + CCl <sub>4</sub>	109.01 <sup>c</sup> ±2.54	133.06±3.11
Silymarin (100 mg/kg) + CCl <sub>4</sub>	107.07 <sup>c</sup> ±3.31	129.21±3.27

Values are expressed as Mean ± Standard Deviation. Values with different superscripts down the column differ significantly ( $p < 0.05$ ).

The result of histopathological analysis showed control rat kidney to express intact basement membranes, normal tubules, and normal capillary tufts (Figure 1A), while the kidney of rat that received CCl<sub>4</sub> alone showed renal tubular nephrosis, discrete necrosis of some tubular cells, blood vessel congestion, severe vacuolar degenerated glomerulus, and swelling of several renal epithelium (Figure 1B). The

photomicrograph of kidney of rat given CCl<sub>4</sub> and 200 mg/kg *T. occidentalis* showed minimized necrosis in renal tubules (Figure 1C), whereas photomicrograph of kidney of rat given CCl<sub>4</sub> and 400 mg/kg *T. occidentalis* had no observed necrosis expression (Figure 1D). Meanwhile photomicrograph of kidney of rat given CCl<sub>4</sub> and 100 mg/kg Silymarin showing mild renal tissue vascular congestion (Figure 1E).



**Fig.1.** A: Photomicrograph of rat kidney showing intact basement membranes, normal tubules and normal capillary tufts. B: Photomicrograph of rat kidney given CCl<sub>4</sub> alone showing renal tubular nephrosis, discrete necrosis of some tubular cells and blood vessel congestion, severe vacuolar degenerated glomerulus and swelling of several renal epithelia. C: Photomicrograph of rat kidney given CCl<sub>4</sub> and 200 mg/kg *T. occidentalis* showing minimized necrosis in renal tubules. D: Photomicrograph of rat kidney given CCl<sub>4</sub> and 400 mg/kg *T. occidentalis* with no observed necrosis expression. E: Photomicrograph of rat kidney given CCl<sub>4</sub> and 100 mg/kg Silymarin showing mild renal tissue vascular congestion.

## Discussion

In assessment of the kidney functionality, serum urea elevation is an indication of kidney failure which normally degenerates to severe kidney damage in prolonged cases (23-24). More so, renal failure is believed to be linked to high serum levels of creatinine, which is a useful index in the diagnosis of chronic kidney disease. Creatinine is not reabsorbed at the Loop of Henle like urea, thus, this marker helps to understand the glomerular filtration rate of the kidney (25). The results of this study showed that CCl<sub>4</sub> induction significantly increased urea and creatinine levels, thus indicating that the impact of CCl<sub>4</sub> metabolism triggers glomerular cell and kidney tubule toxicity, similar to results of previous studies (26-29). The increased levels of blood urea and creatinine in CCl<sub>4</sub>-induced rats implies inability of the kidneys to excrete these by-products leading to their elevated levels in the blood and decreased excretion in urine (30). However, *T. occidentalis* at a dose of 200 mg/kg and 400 mg/kg similar to Silymarin at 100 mg/kg showed a decrease in urea and creatinine levels compared to CCl<sub>4</sub> alone rats, thus restoring the abnormalities in the levels of these biomarkers with 400 mg/kg *T. occidentalis* extracts, having higher activity and bringing the kidney parameters close to normal, which also compared well with standard drug, silymarin similar to related findings of Usunobun et al. (28) and Okolie et al. (29). The renal maintenance following *T. occidentalis* treatment can be attributed to the phytoconstituents in *T. occidentalis* including flavonoids (9), which protected the kidney from free radical attacks and thus against oxidative stress and damage compared to the group that received CCl<sub>4</sub> alone.

Lipids are known to play an important role in the incidence of liver disease. Increased levels of cholesterol and triglycerides are known to be associated with atherosclerosis and coronary heart disease (31). In this study, administration of CCl<sub>4</sub> resulted in significant increase in total cholesterol and triglycerides in CCl<sub>4</sub>-alone rats compared to the control rats and *T. occidentalis* treated rats, a result that was found similar to the work of Sandhya et al. (32). Thus, this study

shows that CCl<sub>4</sub> treatment causes a disruption of lipid metabolism as seen in the increased total cholesterol and triglyceride. The increase in total cholesterol and triglycerides can be attributed to free radicals generated from CCl<sub>4</sub> metabolism and toxicity which damage the endoplasmic reticulum, leading to reduced protein synthesis and lipid accumulation in the liver (33-34). However, although in a higher dose dependent manner, administration of *T. occidentalis* at doses of 200 mg/kg and 400 mg/kg significantly lowered ( $p < 0.05$ ) the levels of total cholesterol and triacylglycerol in comparison with CCl<sub>4</sub> alone administered rats. The result of our study on the ability of *T. occidentalis* to lower CCl<sub>4</sub> elevated blood lipids agrees with similar reported works (35-38). The ability to lower the lipid levels can be attributed to our previously reported phytoconstituents in *T. occidentalis* (9). Specifically, flavonoids have been reported to lower lipid levels by inhibiting lipid absorption, lipogenesis, and stimulating lipolysis (39).

The observed lesions seen in the photomicrograph of kidney of rats that received CCl<sub>4</sub> and the nephroprotection observed following administration of *T. occidentalis* corroborated the results of the observed biochemical parameters.

## Conclusion

In conclusion, the results of our study showed that CCl<sub>4</sub> induction caused hepatorenal dysfunction characterized by altered biochemical, compromised cellular and structural integrity. However, treatment with aqueous leaf extract of *T. occidentalis* significantly reversed these anomalies, suggesting its protective effect against CCl<sub>4</sub>-induced hepatorenal damage. It can be exerted that *T. occidentalis* nephroprotective effect is associated with its ability to improve renal function parameters as it may have increased glomerular filtration rate, resulting in less serum creatinine and urea levels. The antioxidant properties and detoxification capacity of *T. occidentalis* may also be responsible for its protective effect against CCl<sub>4</sub> toxicity.

## Financial Support

This research was funded by Tertiary Education Trust Fund (TETFUND), Nigeria through the 2020 Institution Based Research (IBR) Grant.

### Acknowledgments

The authors humbly appreciate the University management and the animal house staff of Edo State University Uzairue as well as TETFUND, Nigeria for all their support in this research.

### Conflict of interest

We don't have any conflict of interest.

### References

- Hazafa A, Rehman KU, Jahan N, Jabeen Z. The role of polyphenol (flavonoids) compounds in the treatment of cancer cells. *Nutr Cancer* 2020;72(3):386–97. <https://doi.org/10.1080/01635581.2019.1637006>
- Chakraborty S, Majumdar S. Natural products for the treatment of pain: Chemistry and pharmacology of salvinorin A, mitragynine, and collybolide. *Biochemistry* 2021;60(18):1381–400. <https://doi.org/10.1021/acs.biochem.0c00629>
- James SA, Omwirhiren RE, Joshua IA, Dutse I. Anti-diabetic properties and phytochemical studies of ethanolic leaf extracts of *Murraya koenigii* and *Telfairia occidentalis* on alloxan-induced diabetic albino rats. *Ornament* 2016;49. <https://doi.org/10.53858/arocnpr01015260>
- Okoli BE, Mgbeogu C. Fluted pumpkin, *Telfairia occidentalis*: West African vegetable crop. *Econ Bot* 1983;37:145-9. <https://doi.org/10.1007/bf02858775>
- Ehiagbonare JE. Conservation studies on *Telfairia occidentalis* Hook. f. A. indigenous plant used in ethnomedicinal treatment of anemia in Nigeria. *Afr J Agric Res* 2008;3:74-7.
- Oboh G. Hepatoprotective Property of Ethanolic and Aqueous Extracts of Fluted Pumpkin (*Telfairia occidentalis*) leaves against Garlic-induced Oxidative Stress. *J Med Food* 2005;8(4):560-563 <https://doi.org/10.1089/jmf.2005.8.560>
- AS, Eseyin OA, Etim EI, Okokon JE, Anah VU, Attih EE, et al. *Telfairia occidentalis* potentiates the antiplasmodial activity of artemisinins and amodiaquine combination therapy. *Antiinfect Agents* 2020;18(2):152–9. <https://doi.org/10.2174/2211352517666190206160812>
- Kayoed AA, Kayode OT. Some Medicinal Values of *Telfairia occidentalis*: A review. *Am J Biochem Mol Biol* 2011;1(1):30–38.
- Usunobun U, Egharebva E. Phytochemical analysis, proximate and mineral composition and in vitro antioxidant activities in *Telfairia occidentalis* aqueous leaf extract. *J Basic App Sci* 2014;1(1):74-87.
- Aderibigbe AO, Lawal BAS, Oluwagbemi JO. The anti-hyperglycemic effect of *Telfairia occidentalis* in mice. *African J Med Sci* 1999;28:171-5.
- Nwozo SO, Adaramoye OA, Ajaiyeoba EO. Anti-diabetic and hypo lipidaemic studies of *Telfairia occidentalis* on alloxan induced diabetic rabbits. *Nig J Nat Prod Med* 2004;8:45-7. <https://doi.org/10.4314/njnp.v8i1.11814>
- Okokon JE, Ekpo AJ, Eseyin OA. Antiplasmodial activity of ethanolic root extract of *Telfairia occidentalis*. *Res J Parasitol* 2007;2:94-8.
- Adaramoye OA, Achem J, Akintayo OO, Fafunso MA. Hypolipidaemic effect of *Telfairia occidentalis* [fluted pumpkin] in rats fed a cholesterol-rich diet. *J Med Food* 2007;10:316-30 <https://doi.org/10.1089/jmf.2006.213>
- Oboh G, Akindahunsi AA. Change in the ascorbic acid total phenol and antioxidant activity of sun-dried commonly consumed green leafy vegetables in Nigeria. *Nutr Health* 2004;18:29-36. <https://doi.org/10.1177/026010600401800103>
- Kayode OT, Kayode AA, Adetola AA. Therapeutic effect of *Telfairia occidentalis* on protein energy malnutrition-Induced liver damage. *Res J Med Plant* 2009;3:80-92. <https://doi.org/10.3923/rjmp.2009.80.92>
- Kayode AA, Kayode OT, Adetola AA. *Telfairia occidentalis* ameliorates oxidative brain damage in malnourished rat. *Int J Biol Chem* 2010;4:10-8. <https://doi.org/10.3923/ijbc.2010.10.18>
- APA. Guidelines for Ethical Conduct in the Care and Use of Non-Human Animals in Research. American Psychological Association (APA), Washington DC, USA. 2012.
- Saalu LC, Kpela T, Benebo AS, Oyewopo AO, Anifowope EO, Oguntola A, The dose-dependent testicular protective

- and testiculotoxic potentials of *Telfairia occidentalis* Hook f. leaves extract in rat. *Int J Appl Res Nat Prod* 2010;3:27–38.
19. Akang N, Oremosu AA, Osinubi AA, Dosumu OO, Kusemiju TO, Adelokun SA, Umaru ML. Histomorphometric studies of the effects of *Telfairia occidentalis* onalcohol-induced gonado-toxicity in male rats. *Toxicology Reports* 2015;2:968–975. <https://doi.org/10.1016/j.toxrep.2015.06.009>
  20. Fawcett JK, Scott JE. A rapid precise method for the determination of urea. *J Clin Path* 1960;13(2):156-9.
  21. Searcy PI, Bergquist LM. A new color reaction for the quantitation of serum cholesterol. *Clin Chem Acta* 1960;5:192-9.
  22. Tiez NW. *Clinical guide to laboratory tests*. 2nd Edn., W.B. Saunders company, Philadelphia, USA, 1990;pp: 554.
  23. Mitchell HR, Kline W. Core curriculum in nephrology, renal function testing. *Am J Kidney Dis* 2006;47:174–83.
  24. Gowda S, Desai PB, Kulkarni SS, Hull VV, Math AAK, Vernekar SN. Markers of renal function tests. *North Am J Med Sci* 2010;2:170–3
  25. Ugbogu EA, Nwoku CD, Ude VC, Emmanuel O. Evaluating bioactive constituents and toxicological effects of aqueous extract of fermented *Pentaclethra macrophylla* seeds in rats. *Avicenna J Phytomed* 2019;10 (1):101–13.
  26. Safhi MM. Nephroprotective effect of zingerone against CCl<sub>4</sub>-induced renal toxicity in Swiss albino mice: Molecular mechanism. *Oxid Med Cell Longev* 2018;2474831. <https://doi.org/10.1155/2018/2474831>
  27. Elsaywy H, Badr GM, Sedky A, Abdallah BM, Alzahrani AM, Abdel-Moneim AM. Rutin ameliorates carbon tetrachloride (CCl<sub>4</sub>)-induced hepatorenal toxicity and hypogonadism in male rats. *Peer J* 2019;7:e7011. <https://doi.org/10.7717/peerj.7011>
  28. Usunobun U, Inuumoru SC, Onyeaghor C, Lawuru D, Egbo H. Nephroprotective potential of *Chromolaena odorata* (L.) R.M. King & H. Rob. on Methotrexate-induced Kidney damage and Oxidative stress. *J Res App Basic Med Sci* 2022;8(3):118-127 <https://doi.org/10.52547/rabms.8.3.118>
  29. Usunobun U, Okolie PN. Effect of *Annona muricata* pre-treatment on liver synthetic ability, kidney function and hematological parameters in dimethylnitrosamine (DMN)-administered rats. *Int J Med* 2016;4(1):1-5. <https://doi.org/10.14419/ijm.v4i1.5709>
  30. Akinrinde AS, Oduwale O, Akinrinmade FJ, Bolaji-Alabi FB. Nephroprotective effect of methanol extract of *Moringa oleifera* leaves on acute kidney injury induced by ischemia-reperfusion in rats. *Afr Health Sci* 2020;20(3):1382–96 <https://doi.org/10.4314/ahs.v20i3.44>
  31. Sandhya VG, Rajamohan T. Comparative evaluation of the hypolipidemic effects of coconut water and lovastatin in rats fed fat-cholesterol enriched diet. *Food Chem Toxicol* 2008;46(12):3586–92. <https://doi.org/10.1016/j.fct.2008.08.030>
  32. El-Hadary AE, Mohamed FRH. Hepatoprotective Effect of Cold- Pressed *Syzygium aromaticum* Oil against Carbon Tetrachloride (CCl<sub>4</sub>)-Induced Hepatotoxicity in Rats. *Pharm Biol* 2016;54:1364-72. <https://doi.org/10.3109/13880209.2015.1078381>
  33. Dai N, Zou Y, Zhu L, Wang HF, Dai MG. Antioxidant Properties of Proanthocyanidins Attenuate Carbon Tetrachloride (CCl<sub>4</sub>)-induced Steatosis and Liver injury in rats via CYP2E1 Regulation. *J Med Food* 2014;17:663-9. <https://doi.org/10.1089/jmf.2013.2834>
  34. Maameri Z, Djerrou Z, Halmi S, Djaalab H, Riachi F, Hamdipacha Y. Evaluation of Hepatoprotective effect of *Pistacia lentiscus* L. Fatty Oil in rats intoxicated by Carbon Tetrachloride. *Int J Pharmacogn Phytochem Res* 2015;7:251-4. <https://doi.org/10.3844/ojbsci.2015.36.41>
  35. Usunobun U, Okolie PN, Eze GI. Effect of *Vernonia amygdalina* on Some Biochemical Indices in Dimethylnitrosamine (DMN)-induced Liver Injury in Rats. *Int J Animal Biol* 2015;1(4):99-105 <https://doi.org/10.14419/ijpt.v4i1.5785>
  36. Usunobun U, Okolie PN, Eze GI. Modulatory Effect of Ethanolic Leaf Extract of *Annona muricata* Pre-treatment on Liver Damage induced by Dimethylnitrosamine (DMN) in Rats. *Br J Pharm Res* 2015;8(3):1-9 <https://doi.org/10.9734/bjpr/2015/19841>
  37. Che Idris CA, Wai Lin S, Abdull Razis AF. Hypocholesterolaemic and anti-atherogenic effects of

- palm-based oils (Novelin I and Novelin II) in cholesterol-fed rabbits. *Inter J Environ Res Pub Health* 2020;17(9):3226.  
<https://doi.org/10.3390/ijerph17093226>
38. Emmanuel O, Okezie UM, Iweala EJ, Ugbogu EA. Pretreatment of red palm oil extracted from palm fruit (*Elaeis guineensis*) attenuates carbon tetrachloride induced toxicity in Wistar rats. *Phytomedicine Plus* 2021;1(4):100079.  
<https://doi.org/10.1016/j.phyplu.2021.100079>
39. Al-shukor N, Raes K, Smaghe G, Camp JV. Flavonoids: evidence for inhibitory effects against obesity and their possible mechanisms of action. *Flavonoids Antioxidants* 2016;40:496–514.

This is an open-access article distributed under the terms of the [Creative Commons Attribution-noncommercial 4.0 International License](https://creativecommons.org/licenses/by-nc/4.0/) which permits copy and redistribute the material just in noncommercial usages, as long as the original work is properly cited.